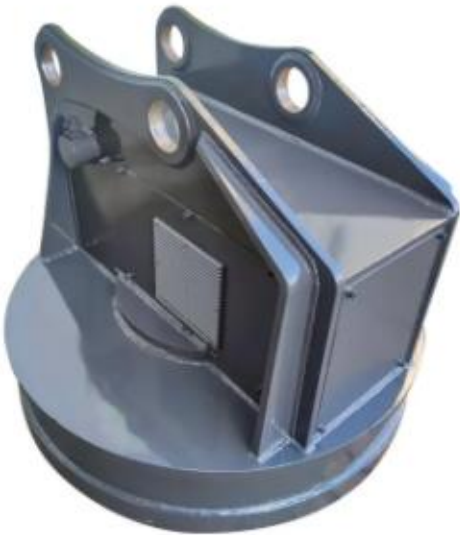


Integrated-power Electromagnetic Chuck

Integrate the generator set and electrical cabinet in the top of chuck (marked in yellow box in Figure 2) . There are no extra accessories, once connected, it can be used anytime you want, and can be stopped as soon as you want, saving the trouble of external power control.

Model Unit	RSHM700	RSHM800	RSHM900	RSHM1000	RSHM1100	RSHM1200	RSHM1300
Set up Pressure (bar)	170	180	190	200	210	250	250
Opening flux (lpm)	30-55	50-100	90-110	100-140	130-170	200-250	250-320
Outer Diamete (mm)	φ700	φ800	φ900	φ1100	φ1200	φ1300	φ1400
Power (Kw)	5	8	8	10	10	15	15
Weight (Kg)	1400	1500	1890	2000	2200	2500	2800



If you want your scrap iron recycling work to be more efficient and convenient, then quickly come and experience the integrated power electromagnetic chuck!

Attlar
Attachment Experts

